



ENVISION

by INMODE



INNOVATE
with
INMODE

FORMAI | LUMECCA I
MORPHEUS8

Precision Tissue Treatments

TECHNOLOGIES ON ENVISION

FORMA I

Forma-I is Health Canada certified to address the symptoms of dry eye disease caused by Meibomian Gland Dysfunction (MGD). It is intended for use in the periorbital area and eyelids and relieves inflammation of meibomian glands and eye irritation.

Forma-I is FDA cleared for the temporary improvement of local blood circulation.

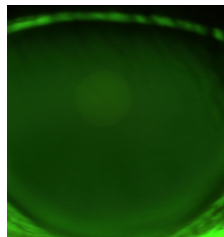
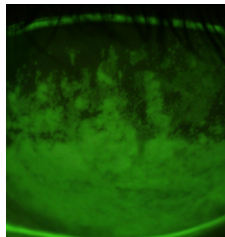
LUMECCA I

Lumecca is FDA cleared for the treatment of benign pigmented epidermal lesions and benign cutaneous vascular lesions. Lumecca, with the Lumecca-I adaptor, delivers precise, targeted, spot-size IPL procedures to treat inflammatory conditions in smaller zones.

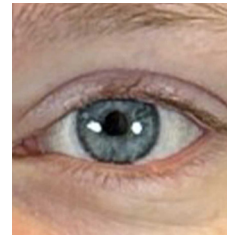
MORPHEUS8

Morpheus8 is a minimally invasive device for fractional coagulation of subcutaneous tissue. Morpheus8 provides an interchangeable portfolio of microneedling tips to deliver customizable fractional treatments.

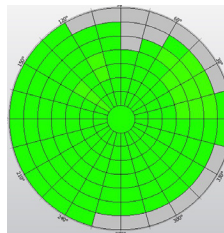
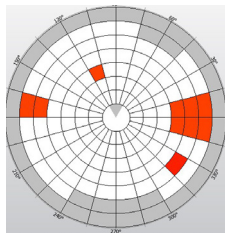
BEFORE & AFTER



DR. B. DORNN



DR. S. PAUL



DR. B. DORNN



DR. B. DORNN

KSM Diagnostic Scan
Ocular surface damage is a major characteristic of dry eye syndrome & presents as Superficial Punctate Keratitis (SPK)



TOLL FREE {855} 411 2639 | WWW.INMODEMD.COM

VSBEENV0323